

R-ADVANCE

THE SAFEST GLOVE



RACLAC[®]
protecting people

INDEX

1	RACLAC _____	6
2	THE FIRST GLOVE FACTORY IN EUROPE ____	8
3	R.ADVANCE	
	3.1 PRODUCT _____	10
	3.2 FLOWPACK _____	11
	3.3 R.PICK SYSTEM ____	16
	3.4 LOGISTICS _____	18
4	APPLICABILITY _____	20
5	ENVIRONMENTAL SUSTAINABILITY _____	22

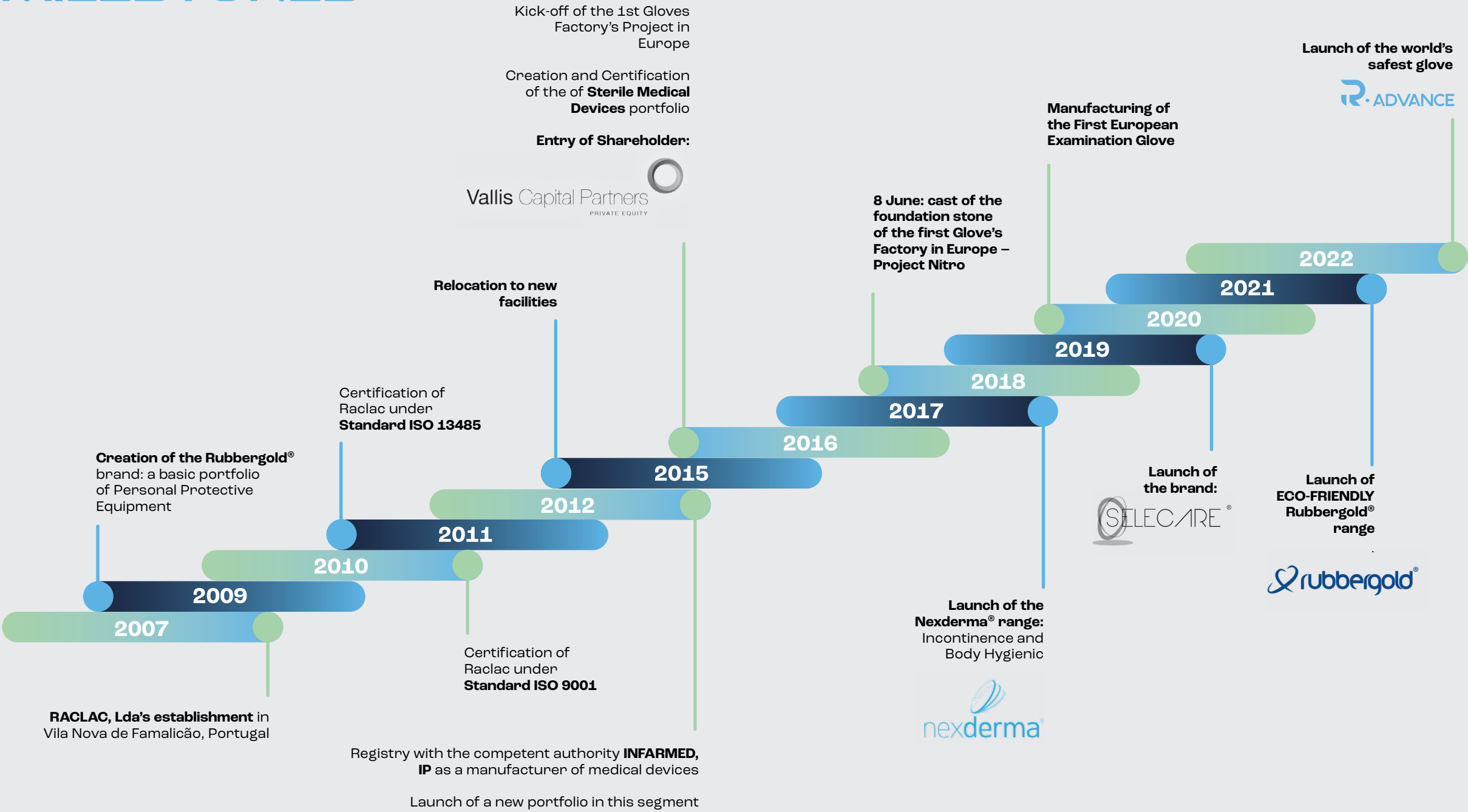


RACLAC IS A **LEADING EUROPEAN COMPANY** IN THE DEVELOPMENT DESIGN, AND MARKETING OF SINGLE-USE MEDICAL AND NON-MEDICAL DEVICES.

RACLAC IS THE OWNER OF THE FIRST PRODUCTION **UNIT** FOR EXAMINATION GLOVES IN EUROPE. THIS **100% AUTOMATED** INDUSTRIAL FACILITY IS THE ONLY ONE IN THE WORLD TO PRODUCE **THE SAFEST** NITRILE EXAMINATION GLOVES FOR DEMANDING AND/OR HIGH-RISK **NON-SURGICAL INVASIVE PROCEDURES**.

R.ADVANCE!

MILESTONES



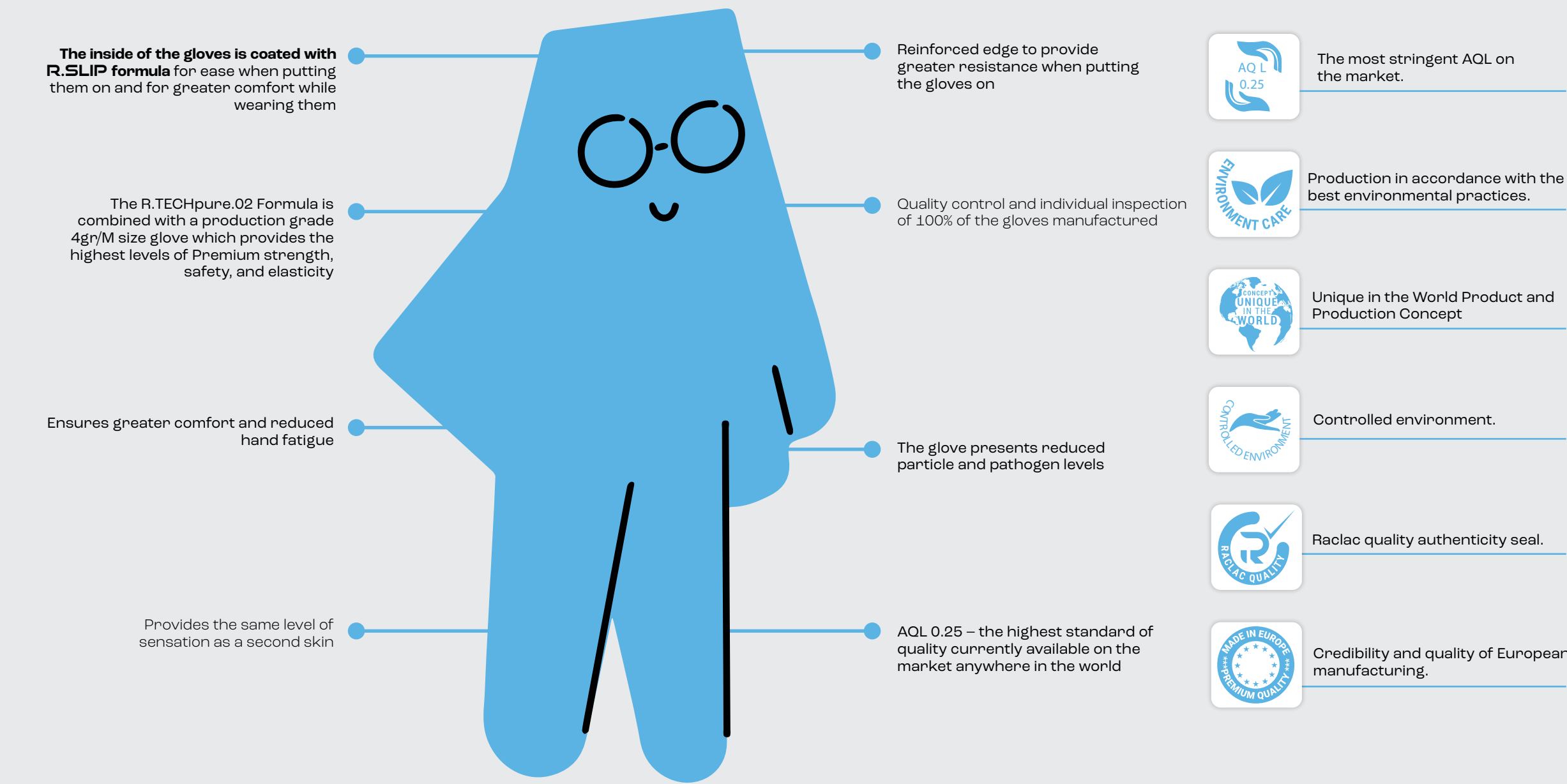
RACLAC INDUSTRIAL FACILITY

A PIONEER AND THE ONLY ONE OF ITS KIND IN THE WORLD



CONVENTIONAL PRODUCTION LINE

Industry 4.0 Plus	Basic production line
100% automated line	Labour-intensive line
Employee-Friendly Production Line	Not applicable
Production output 3 times higher than a conventional line	Reduced production output
100% of production steps managed, controlled, and monitored by an IT platform	Non-existent
Manufacturing concept which provides a high level of consistency and uniformity in the quality of all batches of gloves produced	High inconsistency of the inter-batch glove quality parameters
Production in a Controlled Environment	Production in a contaminated environment
Formulations produced and controlled automatically	Formulations produced manually
100% automated packaging line	Manual Packaging
Quality control individual inspection of 100% of gloves manufactured	Quality control by sampling
Automatic rejection points for non-compliant gloves	Non-existent
Production line producing gloves with AQL from 0.1	Non-existent
Highly energy efficient	Not applicable
Environmentally-friendly production unit	Not applicable



R.ADVANCE FLOWPACK



100% air and watertight packaging



Packaging made of **recycled and recyclable material**



Reduced of cross-contamination



R.ADVANCE
100% INSPECTED GLOVES

RACLAC
protecting people

THE SAFEST GLOVE
AQL 0.25
For high risk non-surgical medical procedures
For invasive & transient usage
To reduce infection risks
To reduce cross contamination
To minimize room contamination

INNOVATIVE PACKAGING
Decontaminated interior
Decontaminable exterior
Air and watertight

NEUTRE
SIZE
M
Keep closed / Minimise Protection



Put the gloves on with the **cuff facing towards the opening**

The **R.CLOP** opening and closing system ensures the **package remains airtight** even after it has been opened and closed several times







The inside of the packaging is **decontaminated on the production line** and the outside of the packaging is decontaminable

TRANSPORT CARD

The transport card is totally customized and distinctive, including detailed information about the product and a color which allows it to be easily identified in any storage environment.



Contains 8 R.ADVANCE packs, ensuring that the weight and size of the package are ergonomically suitable for human handling



R.ADVANCE
100% INSPECTED GLOVES

XS
SIZE

THE SAFEST GLOVE
AQL 0.25
For high risk non-surgical medical procedures
For invasive & transient usage
To reduce infection risks
To reduce cross contamination
To minimize room contamination


INNOVATIVE INNER PACKAGING
Decontaminated interior
Decontaminable exterior
Air and watertight

NEUTRE
SIZE
XS


800 PCS
100 PCS x 8

6 500334 470842

FR: L'ensemble des emballages internes, des PCS, sont decontaminés pendant la fabrication et sont protégés par une couche de protection. L'ensemble des emballages externes, des PCS, sont decontaminés pendant la fabrication et sont protégés par une couche de protection.



Side perforation for easy extraction or dispensing of R.ADVANCE packs, thereby avoiding the use of sharp objects that could compromise the integrity of the gloves.

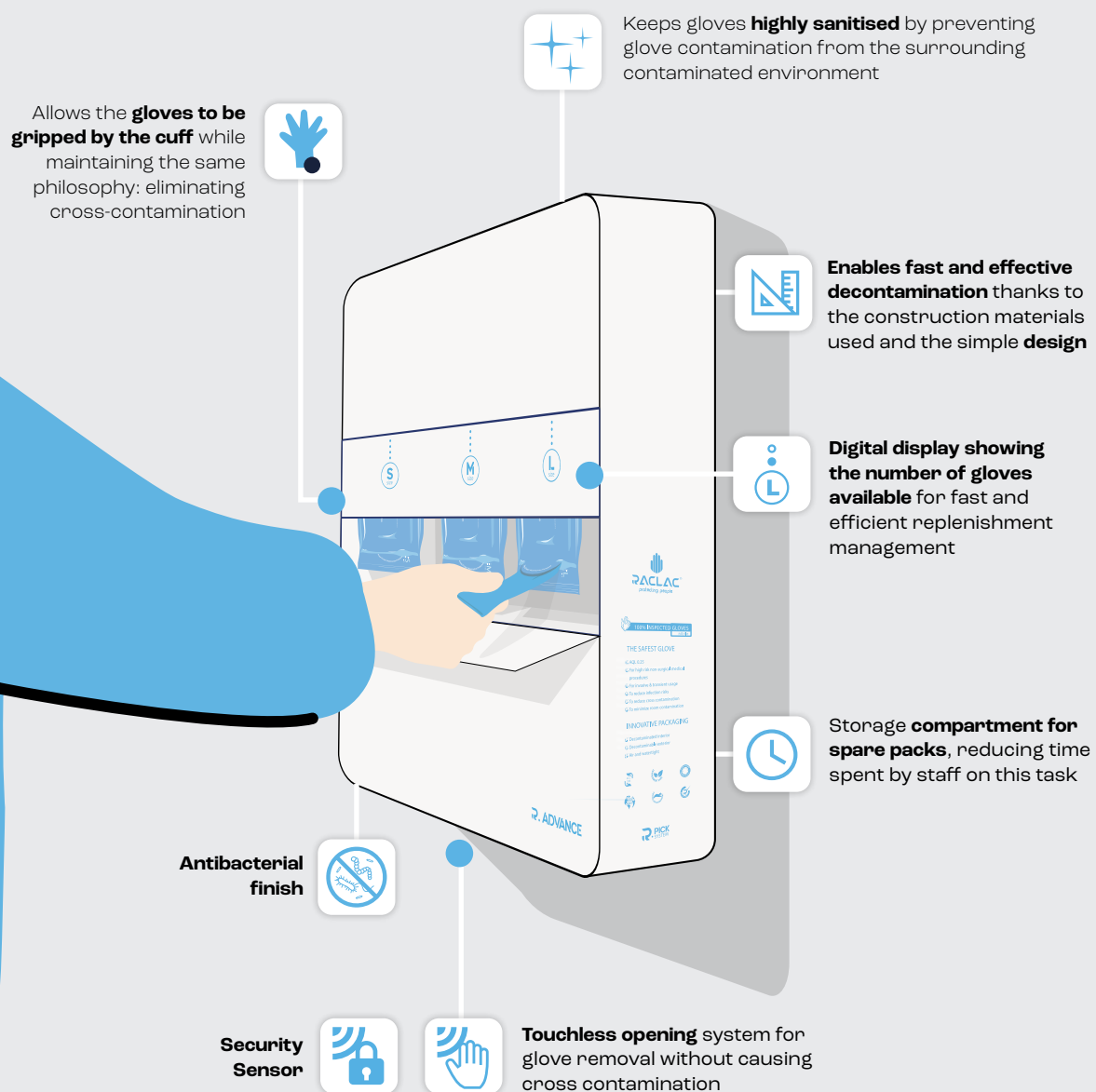


Transport Card made from **recycled and recyclable material.**

R·ADVANCE VS CONVENTIONAL GLOVES

	COMMON EXAMINATION	STERILE EXAMINATION	R·ADVANCE	STERILE SURGICAL	STERILE ANATOMICAL
THE GLOVE					
AQL 0.25 - the highest level of quality currently available on the market anywhere in the world	✗	✗	✓	✗	✗
Weighing 4gr the glove ensure the highest levels of strength and safety	±0,3GR	✓	✓	✓	✓
Gloves subjected to individual quality tests on the production line: 100% inspected	✗	✗	✓	✗	✗
Reinforced edge to provide greater resistance when putting the gloves on	✗	✗	✓	✗	✗
Premium elasticity thanks to the R.TECHpure.02 formula	✗	✗	✓	✗	✗
R.TECHpure.02 formula ensures greater comfort and reduced hand fatigue	✗	✗	✓	✗	✗
R.TECHpure.02 formula provides the same level of sensation as a second skin	✗	✗	✓	✗	✗
Inside of glove coated with R.Slip formula for ease when putting on and greater comfort while wearing	✗	✗	✓	✗	✗
Gloves with reduced particle levels	✗	✓	✓	✓	✓
Gloves with reduced pathogen levels	✗	✓	✓	✓	✓
Sterilised gloves	✗	✓	✗	✓	✓
Right / Left Glove	✗	✗	✗	✓	✓
PRIMARY PACKAGING - FLOWPACK					
Packaging decontaminated on the production line on the inside, and decontaminable on the outside	✗	✗	✓	✗	✗
Packaging made of recycled and recyclable material	—	—	✓	—	—
100% air and watertight packaging	✗	✓	✓	✓	✓
R.CLOP opening and closing system ensures the package remains airtight, even after it has been opened and closed several times	✗	✗	✓	✗	✗
Put the gloves on with the cuff facing towards the opening - reducing cross-contamination	✗	✓	✓	✓	✓
SECONDARY PACKAGING - TRANSPORT CARD					
The customized and distinctive transport card contains information about the product and is colour-coded to enable easy identification	—	—	✓	—	—
Transport Card made from recycled and recyclable material	—	—	✓	—	—
Side perforation for easy extraction on dispensing of R·ADVANCE packs, avoiding the use of sharp objects	✗	—	✓	✓	—

✓ HAS/COMPLIES
 ✗ DOES NOT HAVE/DOES NOT COMPLY
 — UNKNOWN

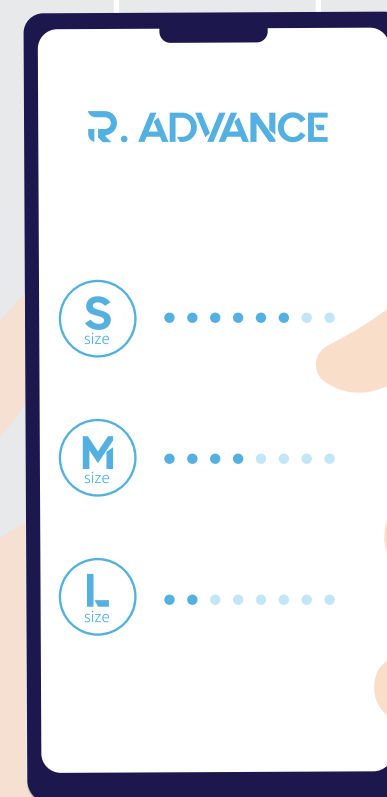


R.PICK SYSTEM APPLICATION

Contributes to **better workplace organisation**



Issues replacement alerts that **eliminate glove breakage**



Real-time stock management, monitoring, and control



Enables **consumption analysis**, by area, department and/or speciality, and categorisation of consumption by cost centre

LOGISTICS



APPLICABILITY

Clean room are defined as spaces with controlled environmental **conditions regarding the presence of particles or microorganisms**, since these contribute to the alteration/contamination of a procedure, result or product

Clean Room

Operating room

Pharmaceutical and Biotechnology Industries

Medical Devices Manufacturing Industries

Aerospace and Aeronautics Industries

Automobile Industry

Food Industry

Semiconductor Industry

Non-Clean Room

Hospitals:

Infectiology

Ophthalmology

Microbiological Analysis

Dermatology

Gynecology and Obstetrics

Urology

Medical emergency

High-risk non-surgical invasive nursing procedures

Pharmaceutical and Biotechnology Industries

Clinical Analysis Laboratories

Biotechnology Research Centres

Dental Clinics

Aesthetic Medicine Clinics

Food Industry

Cosmetic Industry

Applicability in Cleanroom

Non-sterile product with residual contamination level

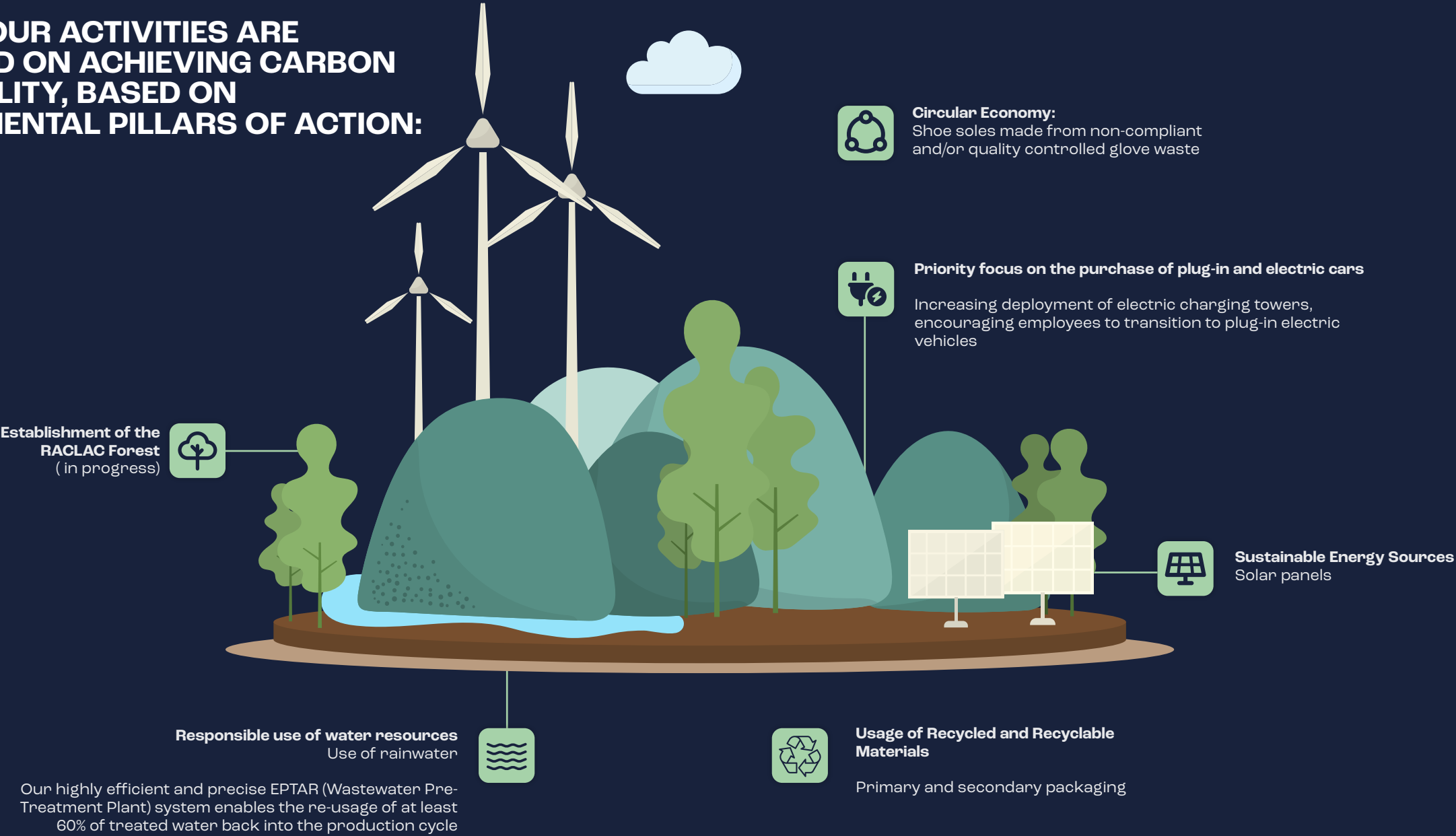
Packaging and Product that do not release particles

Maximum safety for User

Products with the possibility of applying disinfection practices with alcohol

ENVIRONMENTAL COMMITMENT

ALL OF OUR ACTIVITIES ARE
FOCUSED ON ACHIEVING CARBON
NEUTRALITY, BASED ON
FUNDAMENTAL PILLARS OF ACTION:





WWW.RACLAC.PT
+351 252 916 479
RUA DA RIBELA, Nº 600
4770-170 CRUZ PORTUGAL

